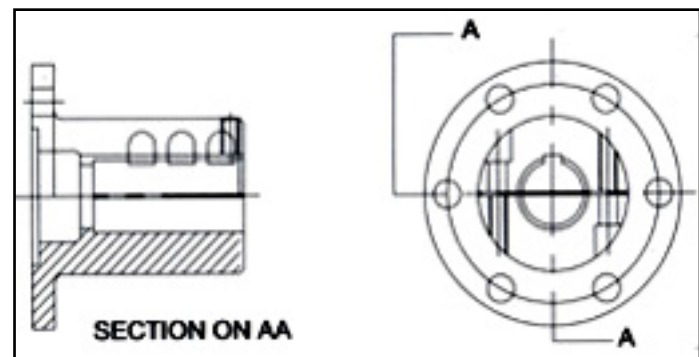


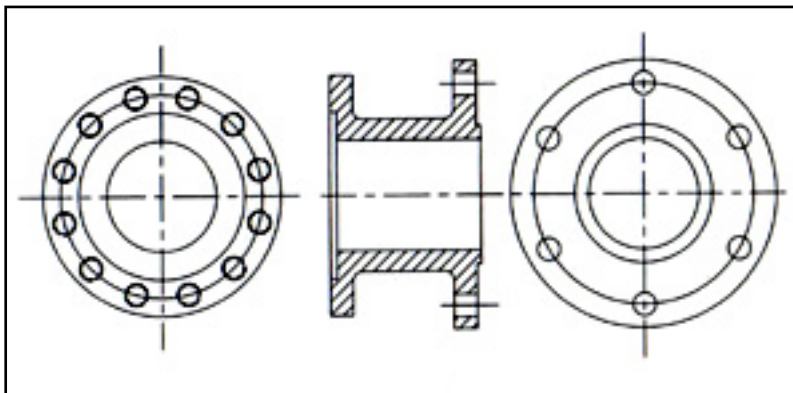
Female Tapered Shaft Coupling

Clements Marine offer a complete range of steel half couplings and adapters. These can be manufactured with tapered or parallel bores, and with male or female gearbox output flange fitting to suit the individual installation. Split couplings are also available with scalloped flanges that enable the removal of clutch parts with the coupling in situ.

Standard and special coupling flanges are manufactured to suit all available gearbox output flanges, the specifications and references of which are featured with flange and coupling sizes on page 3 of this Data Sheet.



Parallel Split Half Shaft Coupling



Flange Adapter

R&D 910 series flexible couplings (see photo) consist of a contoured flexible disc moulded in a tough, yet resilient, polyurethane plastic material. The contoured disc gives clearance for the bolt heads and is able to flex freely. This flexibility takes up any temporary misalignment of the engine and shaft due to normal movement within the boat structure, or due to the engine moving on its rubber vibration isolation mountings. These couplings are fail safe, reduce noise and vibration and are simple to install by bolting between existing shaft flanges.

Bespoke systems that are suitable for heavier duty commercial craft can be supplied by Clements Marine, based on proprietary equipment and adaptations of standard Company designs. Experience in this field has been developed in the supply of gear to commercial craft such as Pilot Boats, Ferries and Boats for Special Service Duty applications for Naval and other organisations around the World over 20 years. Specific designs should be submitted to our technical department to allow us to contribute to the design and development process, preferably before commitment is made to engine size and performance.

Coupling Ref.	Gearbox Flange Coupling										Flexible Coupling Details							
	Gearbox Manufacturer	Dia.		No. Bolts	Nom Hole Dia.		Bolt PCD		Register		Dia		Length		Dia. of Bolts	Capacity /100 rpm		Ref
		mm	in.		mm	in	mm	in	mm	in	mm	in	mm	in		kW	HP	
910-001	BW,PRM,H,T	101.6	4.00	4	10.0	0.39	82.55	3.25	63.5	2.5	114.3	4.50	32.5	1.28	M10	3.73	5	
910-002	Y	101.6	4.00	4	10.0	0.39	78.0	3.07	50.0	1.97	114.3	4.50	32.5	1.28	M10	2.24	3	
910-003	BW,PRM,HMPM,TD	146.0	5.75	6	12.7	0.50	120.6	4.75	76.2	3.00	152.4	6.00	47.5	1.87	1/2UNF	14.92	20	XO
910-004	BW,PRM,H	101.6	4.00	4	10.0	0.39	82.55	3.25	63.5	2.50	114.3	4.50	34.3	1.35	3/8UNF	5.22	7	
910-005	P	101.6	4.00	4	9.7	0.38	82.55	3.25	66.7	2.625	114.3	4.50	34.5	1.35	3/8UNF	5.22	7	
910-006	TD,MPM,H	146.0	5.75	6	16.0	0.63	120.6	4.75	76.2	3.00	152.4	6.00	47.5	1.87	1/2UNF	14.92	20	XOY
910-007	V	101.6	4.00	4	10.0	0.39	80.00	3.15	60.0	2.36	114.3	4.50	43.7	1.72	M10	2.24	3	
910-009	BW,PRM,H,V	127.0	5.00	4	11.2	0.44	107.9	4.25	63.5	2.50	143.0	5.63	45.0	1.77	7/16UNF	9.69	13	XO
910-012	V	127.0	5.00	4	10.0	0.39	100.0	3.93	65.0	2.56	143.0	5.63	45.0	1.77	M10	7.46	10	
910-013	B	90.0	3.54	4	8.1	0.32	74.5	2.93	47.0	1.85	114.3	4.50	32.5	1.28	M8	2.24	3	
910-014	BW,PRM,H,T	101.6	4.00	4	10.0	0.39	82.55	3.25	63.5	2.50	114.3	4.50	32.5	1.28	M10	2.24	3	
910-015	SC 350HD	222.2	8.75	6	11.2	0.44	190.5	7.50	152.4	6.00	222.2	8.75	43.2	1.70	7/16UNF	32.10	43	O
910-016	SC 700HD	260.4	10.25	6	16.0	0.63	228.6	9.00	152.4	6.00	276.4	10.88	58.0	2.28	5/8UNF	48.5	65	XO
910-017	TD	184.2	7.25	6	19.0	0.75	152.4	6.00	95.25	3.75	190.5	7.50	60.7	2.39	5/8UNF	29.84	40	YO
910-018	PRM	184.2	7.25	6	16.0	0.625	152.4	6.00	95.25	3.75	190.5	7.50	60.7	2.39	5/8UNF	29.84	40	O
910-019	V	101.6	4.00	4	10.0	0.39	80.0	3.15	60.0	2.36	114.3	4.50	32.5	1.28	M10	2.24	3	
910-020	V	101.6	4.00	4	10.0	0.39	80.0	3.15	60.0	2.36	114.3	4.50	32.5	1.28	M10	3.73	5	
910-021	E,S	101.6	4.00	2	11.2	0.44	76.0	3.00			108.0	4.25	41.7	1.64	7/16UNF	1.87	2.5	
910-022	TD	228.6	9.00	8	22.6	0.89	190.5	7.50	152.4	6.00	222.2	8.75	44.5	1.75	1/2UNF	44.0	65	XOY
910-024	TD	266.7	10.5	8	25.6	1.00	222.2	8.75	127.0	5.00	276.4	10.88	56.7	2.23	5/8UNF	63.41	85	XOY
910-025	BW,PRM,HMPM,TD	146.0	5.75	6	12.7	0.5	120.6	4.75	76.2	3.00	152.4	6.00	49.8	1.96	1/2UNF	20.88	28	XO
910-026	TD	146.0	5.75	6	16.0	0.63	120.6	4.75	76.2	3.00	152.4	6.00	49.8	1.96	1/2UNF	20.88	28	XOY
910-028	B	90.0	3.54	4	8.1	0.32	74.5	2.93	47.0	1.85	114.3	4.50	32.5	1.28	M8	3.73	5	
910-029	BW,H,V	127.0	5.00	4	11.2	0.44	107.9	4.25	63.5	2.50	143.0	5.63	52.4	2.06	7/16UNF	14.92	20	O
910-030		292.1	11.5	8	25.4	1.00	247.6	9.75	152.4	6.00	292.1	11.50	58.4	2.30	5/8UNF	89.52	120	XOY
910-032	BW,PRM,MPM,TD	146.0	5.75	6	12.7	0.5	120.6	4.75	76.2	3.00	152.4	6.00	55.4	2.18	1/2UNF	27.60	37	
910-033	TD,MPM,H	146.0	5.75	6	16.0	0.63	120.6	4.75	76.2	3.00	152.4	6.00	55.4	2.18	1/2UNF	27.60	37	Y
910-035	Made to fit flg.	340.0	13.38	8	25.4	1.00	293.3	11.625	152.4	6.00	348.0	13.70	108	4.25	5/8UNF	119.36	160	Y
910-036	TD	127.0	5.00	4	10.0	0.39	104.8	4.125	63.5	2.50	143.0	5.63	45.0	1.77	M10	7.46	10	
910-037	Y	130.0	5.12	4	12.3	0.48	107.9	4.25	63.5	2.50	143.0	5.63	51.1	2.01	7/16UNF	9.69	13	
910-038	D	178.0	7.00	6	14.3	0.56	152.0	5.985	100.0	3.937	190.5	7.50	63.3	2.49	M14	41.0	55	
910-039	TD	184.2	7.25	6	19.0	0.75	152.4	6.00	95.25	3.75	190.5	7.50	63.3	2.49	5/8UNF	41.0	55	Y
910-040	PRM	184.2	7.25	6	19.0	0.75	152.4	6.00	95.25	3.75	190.5	7.50	63.3	2.49	5/8UNF	41.0	55	
910-041		292.1	11.5	8	25.4	1.00	247.6	9.75	152.4	6.00	292.1	11.50	58.4	2.30	5/8UNF	104.5	140	Y
910-042	D	287.2	11.3	6	25.1	0.98	240.0	9.45	160.0	6.30	192.1	11.50	58.4	2.30	5/8UNF	89.52	120	O
910-043	Y	101.6	4.00	4	10.0	0.39	78.0	3.15	50.0	1.97	114.3	4.50	32.5	1.28	M10	3.73	5	
910-044	B/W,PRM,H,V	127.0	5.00	4	11.2	0.44	107.9	4.25	63.5	2.50	143.0	5.60	45.0	1.77	7/16UNF	5.96	8	XO
910-045		340.0	13.38	8	25.4	1.00	293.3	11.625	152.4	6.00	348.0	13.70	108	4.25	3/4UNF	171.5	230	Y
900-003	Lister, cast	120.7	4.75	6	11.2	0.44	98.5	3.875	63.5	2.50	150.9	5.94	69.9	2.75	7/16UNF	7.46	10	

O These Flexible couplings have been approved by Bureau Veritas

X These Flexible couplings have been approved by Lloyds Register of Shipping

Y These Flexible couplings have been fitted with a shouldered bush to locate the gearbox flange.

Abbreviations;H-Hurth,T-Technodrive,Y-Yanmar,TD-TwinDisc,P-Paragon,V-Volvo,B-Bukh,SC-Self Change
E-Enfield,S-Sonic,D-Daewoo.