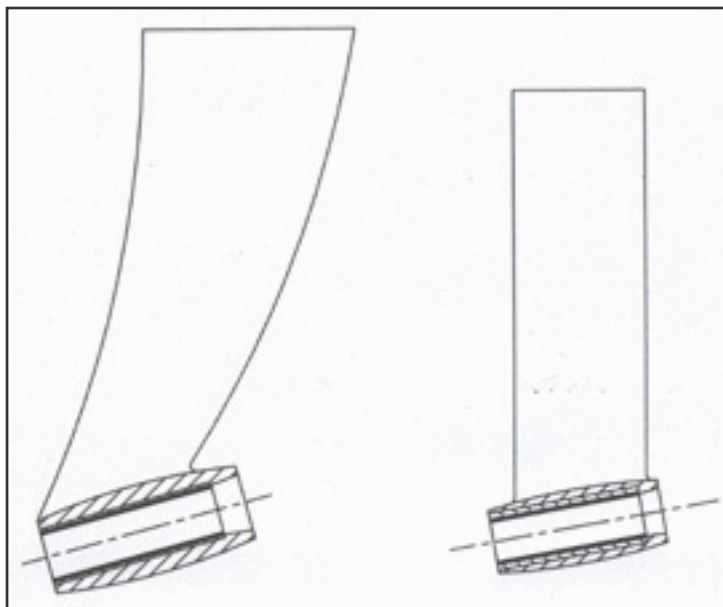


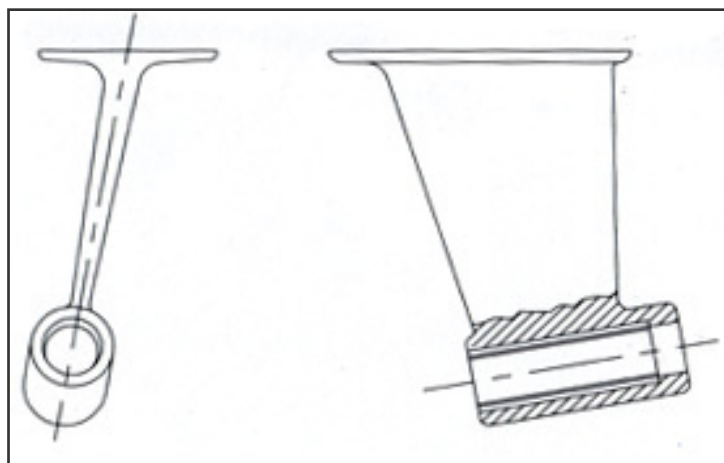


Clements Marine can offer a wide range of glass-in and palm-type 'P' brackets to cover most requirements for power craft and sailing auxiliaries. Special designs can be produced using 'in-house' adaptable tooling, thus always giving accurate machined repetition for finished 'P' and 'A' brackets.

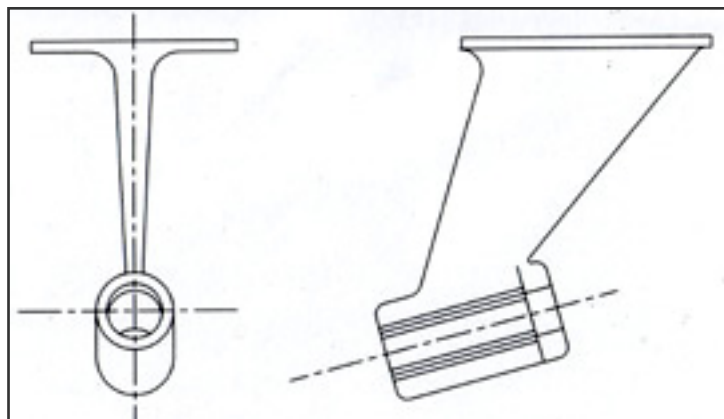
Most brackets for sea-going vessels are cast from BS1400 nickel aluminium bronze or BS1400 HTB1 high tensile brass. Alternatively, they may be fabricated from mild steel or 316 stainless steel. Each bracket is despatched complete with high specification water lubricated rubber cutless bearings (see TD05).



Glass in Type. Designed for internal bonding through GRP hulls, having the advantage of infinite adjustment during installation. Fitted with a water lubricated cutless bearing.



Platform Type (angled) Cast in manganese or aluminium bronze and fitted with a water lubricated cutless bearing.



Platform Type (vertical) Cast in manganese or aluminium bronze and fitted with a water lubricated cutless bearing.

Fabricated Brackets in steel or stainless steels can be made to order. These are produced with composite material shelled cutless bearings to avoid dissimilar metal reactions (see TD05).

Imperial or metric sizes are available according to customer requirements. Shaft bearing design can be submitted using TD12 and TD05, but bearing sizes can equally be referenced by consultation with our technical staff.

Large 'A' brackets are regularly produced in sizes to suit major sailing vessels, in cast and fabricated form.

All Clements 'P' and 'A' brackets can be manufactured to order if required under Lloyds Register, Norske Veritas or ABS survey.